

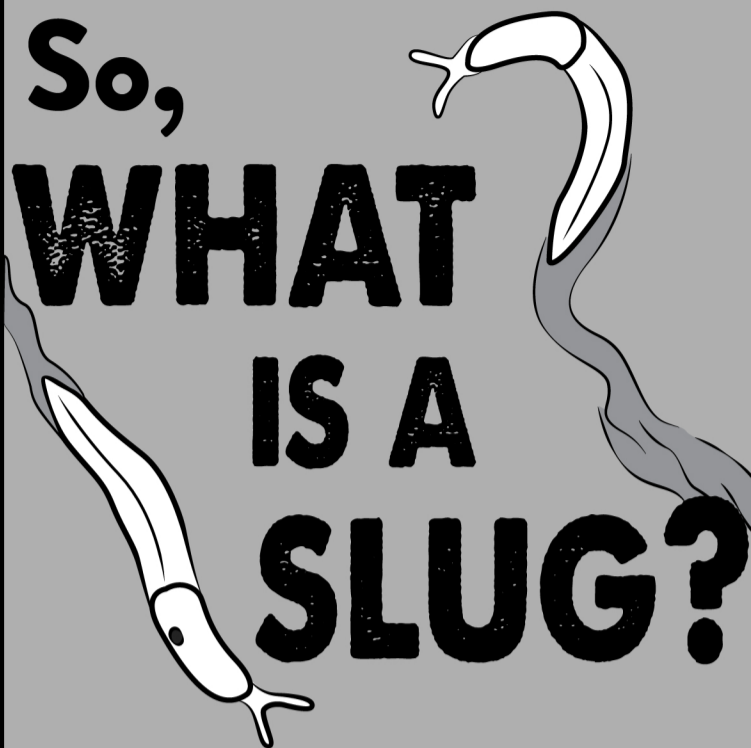
SLUGS of the PNW

By: Sami Chang



Slime-utations!

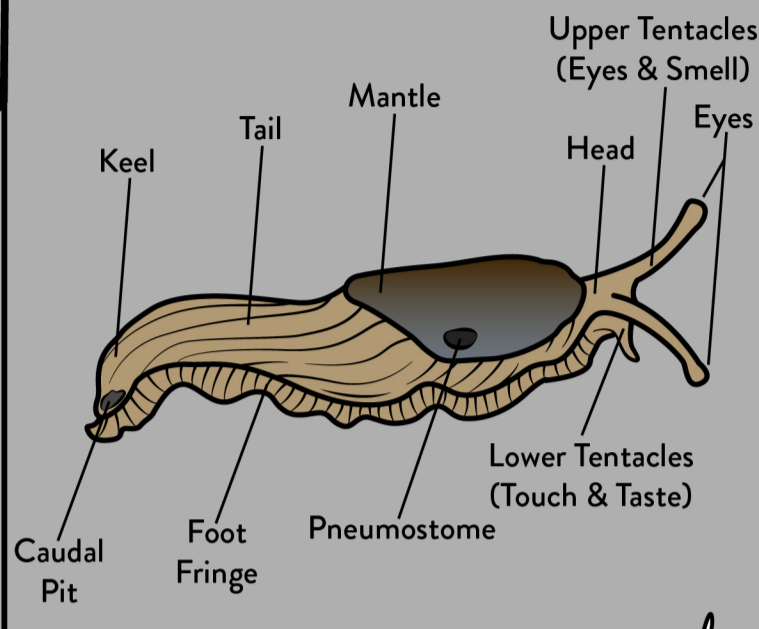
So, WHAT IS A SLUG?



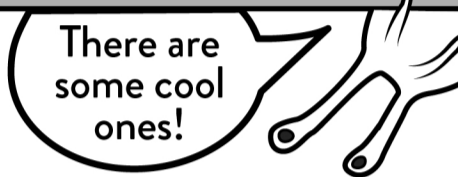
I'm basically a snail with no obvious shell



Parts of a slug



Now that we know what a slug is, let's find out which ones live in the PNW!



NATIVE SLUGS

Pacific Banana Slug
(*Ariolimax columbianus*)

I'm the 2nd largest slug in the world!

Taildroppers
(*Prophysaon spp.*)

Like some lizards, we can drop our tails to get away from predators

Jumping-Slugs
(*Hemphillia spp.*)

Sometimes we flop around to potentially avoid being eaten by predators

However, not all slugs are native to the PNW. Some were introduced to the area and decided to stay.

Leopard Slug (*Limax maximus*)

This place seems like a nice place to live!

I think I'll stay here too!

Yellow Slug (*Limacus flavus*)

Arions
(*Arion spp.*)

We're moving in!

Grey Field Slug
(*Deroceras reticulatum*)

This garden is our house now!

Shelled Slug (*Testacella halioides*)

These are the slugs that are likely found in your gardens or suburban & urban environments. However, some have expanded to more natural areas.

Where can I find slugs?

Slugs need to stay as moist as possible, which is why they are more active at night when the sun is not out. During the day, they can be found under logs, leaf litter, or rocks.

You found me!

You won't usually find native slugs in urban or suburban areas as they really love living in forests.

If you do move logs or rocks to look for slugs, just remember to put everything back the way you found it because these are their homes.

Now that you know what slugs are and where to find them, See you soon happy searching!